



Poticanje energetske  
efikasnosti u Hrvatskoj

# EE Info-Display – Technical Description of City-Light Showcase Cabinet



Sustavno gospodarenje  
energijom u gradovima  
i županijama u Hrvatskoj



The light from the display

Cut from coloured  
Plexiglas thick 1cm



Sustavno gospodarenje  
energijom u gradovima  
i županijama u Hrvatskoj



The light from the display (led)



# EE Info-Display

## CITY LIGHT (CL) SHOWCASE CABINET SELF-STANDING, TWO-SIDED

### 1 GENERAL

- 1.1 CL will be placed in a pedestrian area with higher frequency of passers-by and will be oriented in a way to attract attention of pedestrians.
- 1.2 CL should be made for two-sided (both-sided) advertising – poster placing.

### 2 CONSTRUCTION

- 2.1 Construction of CL has to be made out of welded galvanized steel profiles.
- 2.2 CL doors have to be made from special extruded aluminium profile with elox protection. Profiles need to be put together with specially adapted junctions. Doors should be glassed with transparent tempered glass, 5 mm thick. Tempered glass has to be installed on CL outside aluminium showcase. The construction cabinet doors have to be placed on CL by hanging and in opened position should be retained by two suspensors.
- 2.3 Poster frame, placed on a galvanized steel profile construction, has to be a milk colour acrylate, 3 mm thick in order to let through sufficient amount of light. On the acrylate there should be poster holders.
- 2.4 On the upper edge of the City Light showcase there has to be a highlighted 'EE' label cut from 1 cm thick coloured Plexiglas lighted by LED light built-in on top of the advertising panel in a way to disperse light only on the label.

### 3 DIMENSIONS

- 3.1 CL cabinet dimensions: 1300 x 1850 / 2245 x 200 mm.
- 3.2 Dimensions of the visible part of the posters: 1163 x 1716 mm.

### 4 ELECTRICAL INSTALLATION

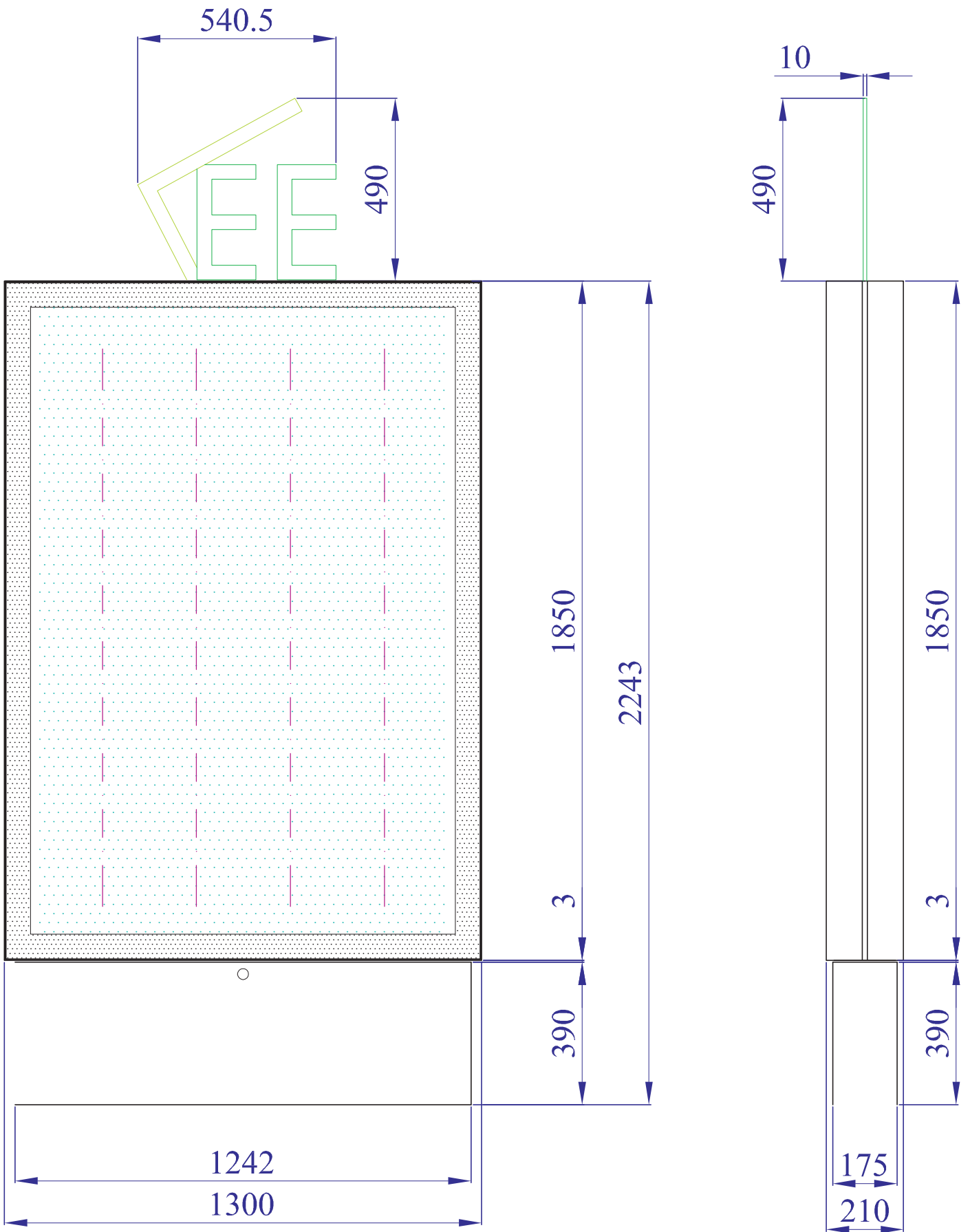
- 4.1 Electrical installation of the CL cabinet need to consists of four AURA type fluorescent tubes, of 1500 mm length, each 58 W located in water tight heads, along with related installation. Electricity necessary to power the CL cabinet should come through electrical cables installed under the showcase and through the cabinet.

### 5 FIRE PROTECTION MEASURES

- 5.1 The showcase in subject is not subjective to fire, materials used should be substantially fire resistant. The CL showcase will be placed in an open urban area.

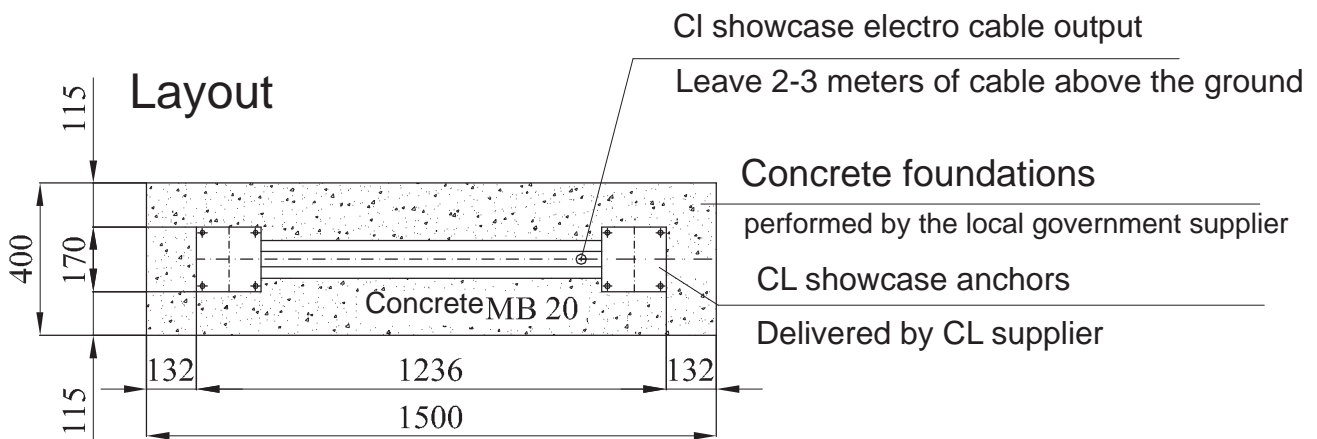
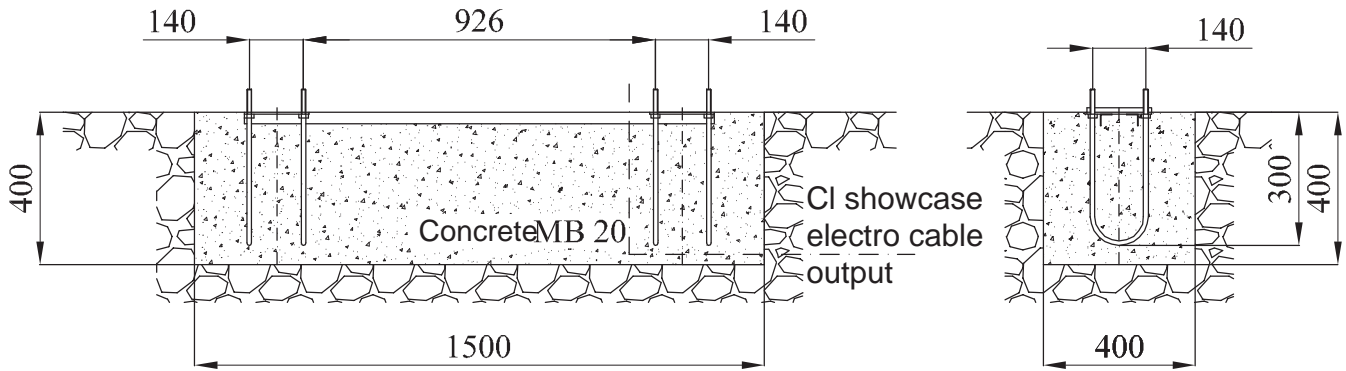
### 6 ASSEMBLING THE CL SHOWCASE

- 6.1 The CL showcase has to be placed onto the final concrete bed over base boards with arrays fastened onto anchors that have previously been concreted into the final concrete bed.



All measurements in centimetres

# Scheme



After concreting the foundations it is necessary to leave concrete to dry for 7-10 days prior to the CL installation

All measurements in millimetres